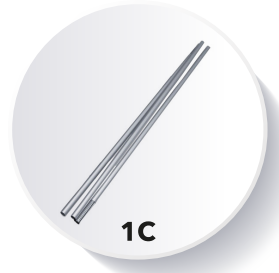
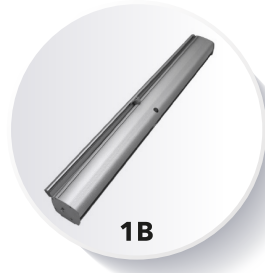


# ESSENTIAL/CLASSIC ROLLER BANNER

## ASSEMBLY GUIDE IN SIX EASY STEPS

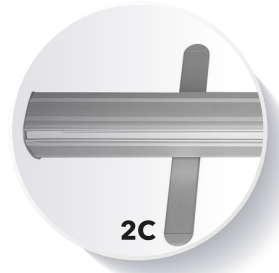
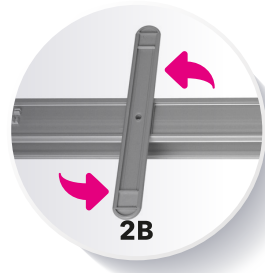
### STEP 1

Unzip carry case **(1A)**, remove banner base **(1B)** and pole **(1C)** - located within the base.



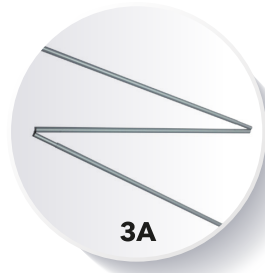
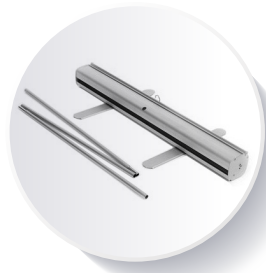
### STEP 2

Lay base **(2A)** face down and turn support feet **(2B)** 90 degrees. Flip base over to stand upright **(2C)**.



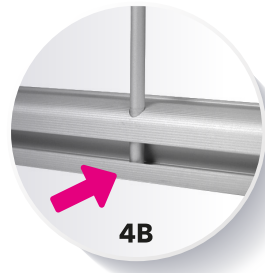
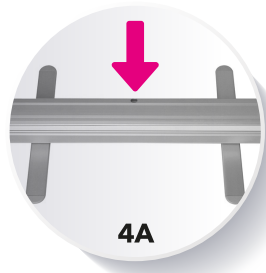
### STEP 3

Unfold pole **(3A)** and slot pieces together **(3B)** to make a straight rigid pole.



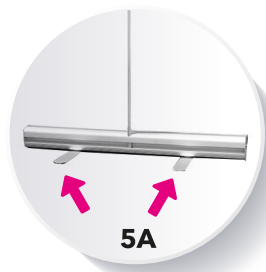
### STEP 4

Insert pole into base hole **(4A)** ensuring it reaches the bottom of the base **(4B)**.



### STEP 5

Stand on both base feet for support **(5A)** and use both hands to slowly pull graphic from base **(5B)**.



### STEP 6

Attach the pole onto upper support rail **(6A)** and display **(6B)**. Reverse all steps to disassemble.

