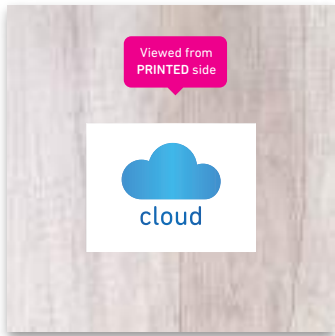
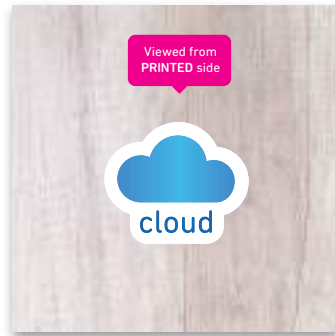


SELF ADHESIVE GUIDE

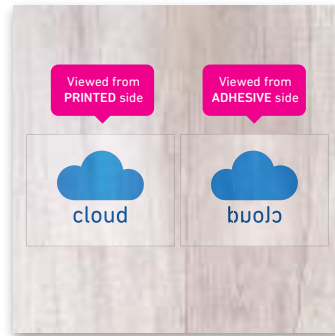
File preparation for self adhesive



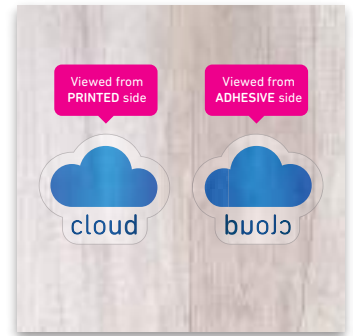
White Permanent Self Adhesive
Forward printed
Square cut



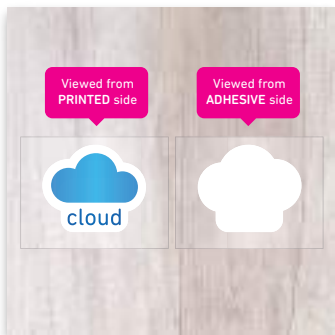
White Permanent Self Adhesive
Forward printed
Cut to shape



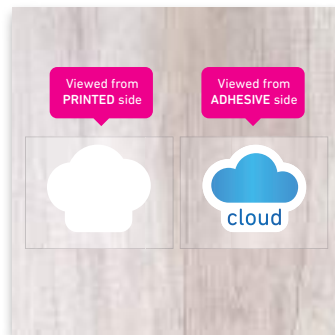
Clear Self Adhesive/Clear Cling
Forward printed
Square cut
White ink - no



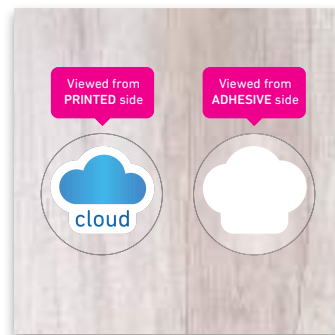
Clear Self Adhesive/Clear Cling
Forward printed
Cut to shape
White ink - no



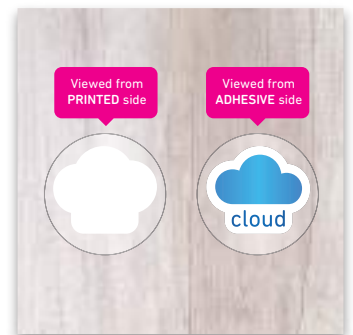
Clear Self Adhesive/Clear Cling
Forward printed
Square cut
White ink - selective white



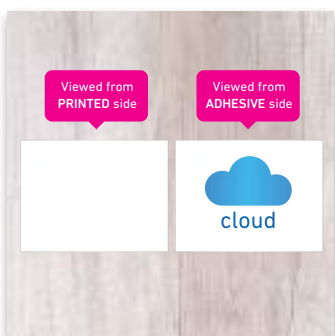
Clear Self Adhesive/Clear Cling
Reverse printed
Square cut
White ink - selective white



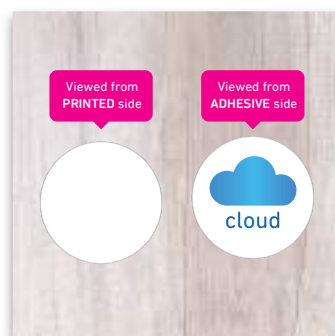
Clear Self Adhesive/Clear Cling
Forward printed
Cut to shape
White ink - selective white



Clear Self Adhesive/Clear Cling
Reverse printed
Cut to shape
White ink - selective white



Clear Self Adhesive/Clear Cling
Reverse printed
Square cut
White ink - flood white



Clear Self Adhesive/Clear Cling
Reverse printed
Cut to shape
White ink - flood white

WHITE INK

Selective white - must be supplied as a spot colour called 'White'. White areas must be at the top of the layer order (covering print as artwork necessary, but below any cut paths) and set to 'Overprint'.

Flood white - we will apply a white layer to your artwork automatically. Flood white covers the entire area of the sticker.

No white - simply supply your artwork as normal. No white will be printed.

REVERSE PRINT / FORWARD PRINT

Forward print - we print your artwork onto the non-adhesive side of the material. It will be readable from the non-adhesive side.

Reverse print - we flip your artwork then print onto the non-adhesive side of the material. It will be readable from the adhesive side.

CUT TO SHAPE / SQUARE CUT

Square cut - we trim your stickers to the size specified in your order.

Cut to shape - we trim your stickers to any shape you require. Provide a cut path as a continuous solid stroke (not dashed) in a spot colour called 'CUTTER'. The cut path must be at the top of the layer order and set to 'Overprint'.